



**B-ARTS Enrolment Guide**

**Course Structure (600 credit points)**

**YEAR 1**

**Semester 1**

COMS1010 Academic & Professional Communications  
COMS1001 Engaging Media  
MEDA1001 Dig Media Mgmt & Emerg Techno  
----- Elective **or** Second Major Unit

**Semester 2**

CULT1000 Senses of Place  
COMS1005 Making Meanings  
VISA1007 Creative Image Communication  
----- Elective **or** Second Major Unit

**YEAR 2**

**Semester 1**

ICTE2002 Human Computer Interfaces  
NETS2000 Web Media\* **or**  
GRDE2010 Motion Graphics Design Introduction  
----- Elective **or** Second Major Unit  
----- Elective **or** Second Major Unit

**Semester 2**

ICTE2000 Int, Virtual & Immerse Env  
MEDA2002 Multi-Dis Visualisation Technologies **or**  
ICTE2001 Programming for Visualisation Technologies  
----- Elective **or** Second Major Unit  
----- Elective **or** Second Major Unit

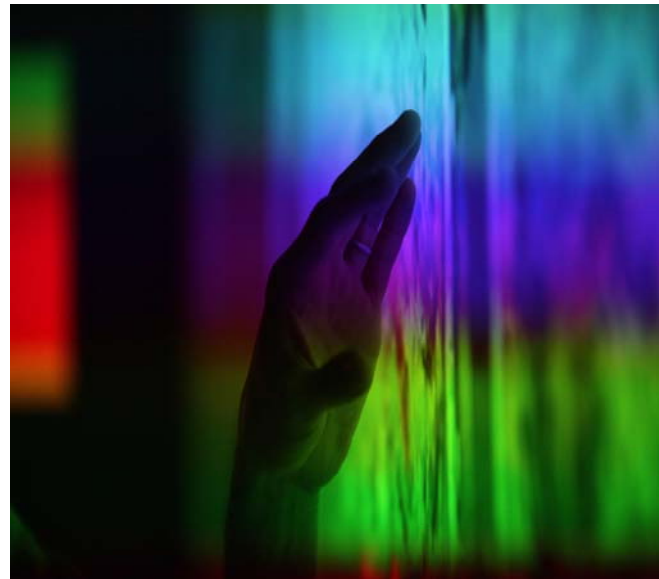
**YEAR 3**

**Semester 1**

CWRI3012 Digital Humanities  
MEDA3000 Mob, Loc and Ubiquitous Media **or**  
ICTE3001 Augmenting Reality  
----- Elective **or** Second Major Unit  
----- Elective **or** Second Major Unit

**Semester 2**

MEDA3001 Major Digital Humanities Project  
MEDA3002 Advanced Multi-Disc Visual Tech  
----- Elective **or** Second Major Unit  
----- Elective **or** Second Major Unit



**Recommended Electives**

GRDE1013 Intro 3D Modelling & Rendering  
NETS1001 Web Communications  
SPRO1000 Introduction to Screen Practice  
NETS2001 Web Publishing\*  
SPRO2001 Screen Production Using Digital Effects  
NETS2000 Web Media\*  
NETS3010 Web Play, Online Games & Gamification\*  
SPRO3006 Multiplatform and Transmedia Creation  
SPRO3001 Advertising & Music Video Production\*

Please note units may not always be available.

Electives are a unit of study chosen by a student that is not specified in the course structure. You may choose any unit offered across the University, subject to meeting the pre-requisite.

For more units offered within the University or descriptions of the unit content, please visit:  
<http://handbook.curtin.edu.au>

Enrolment dates and deadlines can be found at:  
<http://students.curtin.edu.au/administration/dates/index.cfm>

Disclaimer: Information in this publication is correct at the time of printing and valid for 2016, but may be subject to change. In particular, the University reserves the right to the content and/or method of assessment, to change or alter tuition fees, to withdraw any unit of study or program which it offers, to impose limitations on enrolment in any unit or program and to vary any arrangements for any program. Curtin does not accept responsibility for any consequences which may be placed on this material by any person. International Students - Students studying in Australia on a student visa can only study full-time. Australian citizens, permanent residents and international students studying outside Australia may have the choice of full-time, part-time and external study, depending on course availability.

\* These units have pre-requisites, please refer to course handbook for further requisite information (<http://handbook.curtin.edu.au>)

All units have a 25 credit value unless stated otherwise. Please contact your course co-ordinator for further information.